



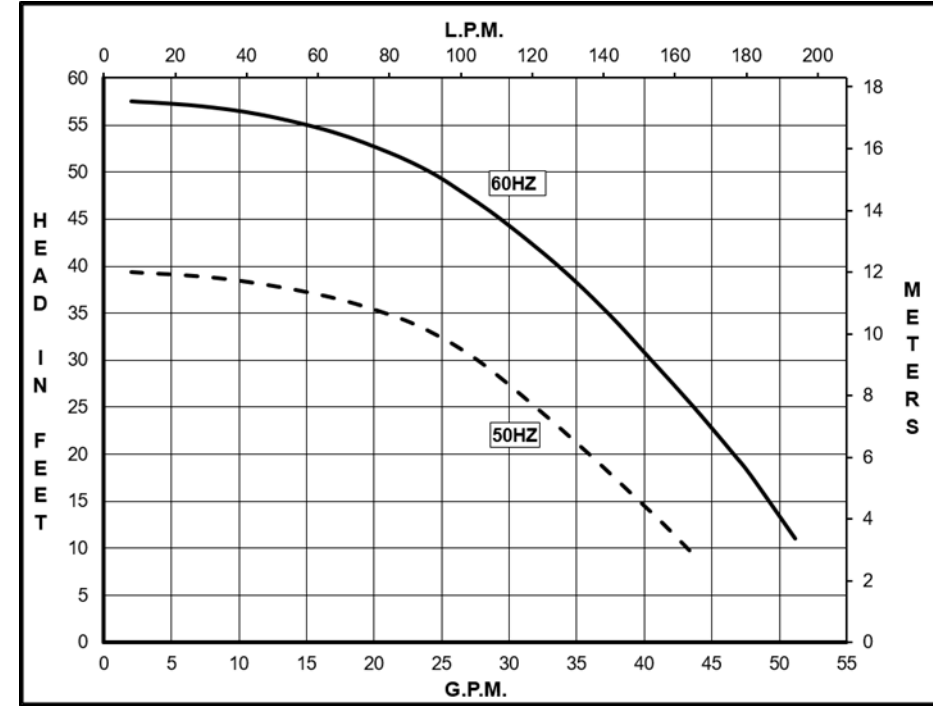
MARCH PUMPS

1819 PICKWICK AVE., GLENVIEW, IL 60026-1306, U.S.A
 PHONE: (847) 729-5300 - FAX: (847) 729-7062
 WWW.MARCHPUMP.COM

DESCRIPTION & OPERATION: The March beer pump TE-7SSB-MD is a non-self-priming magnetic drive unit specifically to handle hot wort and water. The unit requires liquid being pumped to lubricate the internal parts. If the pump is run dry for a period of time the impeller and shaft may become damaged. To regulate the flow use a valve on the discharge/outlet.

ELECTRICAL: 1 phase 115/230 Volt, 60 Hz, 110/220 Volt, 50 Hz. 3 phase 230/460 Volt, 60 Hz, 190/380 Volt, 50 Hz. Motors are totally enclosed fan cooled and are U.L. listed as well as rated for continuous operation. All motors have a conduit box for electrical connections.

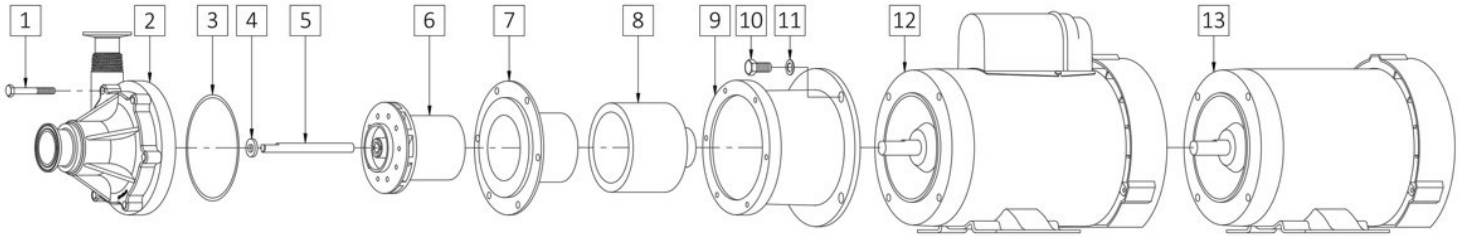
TE-7SSB-MD With 1-1/2" Sanitary Fittings



Specifications		TE-7SSB-MD
Product	1Ph	0155-0249-0700
	3Ph	0155-0249-0800
Inlet-Outlet		1-1/2"Tri-Clamp-1-1/2"Tri-Clamp
Max Internal Pressure		200PSI (1378 kPa)
Max Liquid Temperature		225F (107C)

Model	60Hz											50Hz										
	Max Flow		Max Head			Electrical						Max Flow		Max Head			Electrical					
	GPM	LPM	FT	PSI	M	Ph	V	A	HP	kW	RPM	GPM	LPM	Feet	PSI	M	Ph	V	A	HP	kW	RPM
TE-7SSB-MD	53	201	57.5	24.9	17.5	1	115/230	12.6/6.2	1	0.75	3450	47	180	39.4	17.1	12	1	110/220	14.3/7.1	1	0.75	2850
TE-7SSB-MD	53	201	57.5	24.9	17.5	3	230/460	3.0/1.5	1	0.75	3450	47	180	39.4	17.1	12	3	190/380	3.3/1.6	1	0.75	2850

All specifications & data are based on pumping water & are intended as a guideline only. Specifications may vary with different motors.



NOTE: When attaching drive magnet to the motor shaft, position the face of the drive magnet 1/8 inch below the face of the motor bracket.

TE-7SSBMD

Item	Part Number	QTY REQ	Description
1	0155-0014-1000	6	1/4"-20 x 2" Lg. Screw (Stainless)
2	0155-0314-0100	1	Front Housing (316SS)
3	0155-0105-1100	1	1/8" CS x 4-3/8" OD "O" Ring (EPDM)
4	0155-0009-1000	1	Thrust Washer (Ceramic)
5	0155-0081-1000	1	4.257"Lg. Shaft (316SS)
6	0155-0160-0200	1	Impeller with Carbon Bushing (Glass Filled Kynar)
7	0155-0035-0010	1	Rear Housing (316SS)
8	0155-0130-0200	1	Drive Magnet
9	1095-0015-0010	1	Motor Bracket (Aluminum)
10	0155-0017-1000	4	3/8"-16 x 3/4" Lg. Screw (Stainless)
11	0155-0019-1000	4	3/8"ID x 5/8"OD Washer (Stainless)
12	0155-0173-1000	1	1 Phase TEFC Motor 115/230V, 50/60Hz, 1HP
13	0155-0174-1000	1	3Phase TEFC Motor 230/460V, 50/60Hz, 1HP

NOTE: Contact Factory for other materials and/or parts not listed.
Special voltage motors are available upon special order.

Materials in contact with the liquid:

TE-7SSB-MD: 316SS, Glass Filled Kynar, Carbon, Ceramic, EPDM

LIMITED WARRANTY: March pumps are guaranteed only against defects in workmanship or materials for a period of one year from date of manufacture pumping water. For the complete warranty and to register online go to www.marchpump.com/warranty-registration