



# MARCH PUMPS

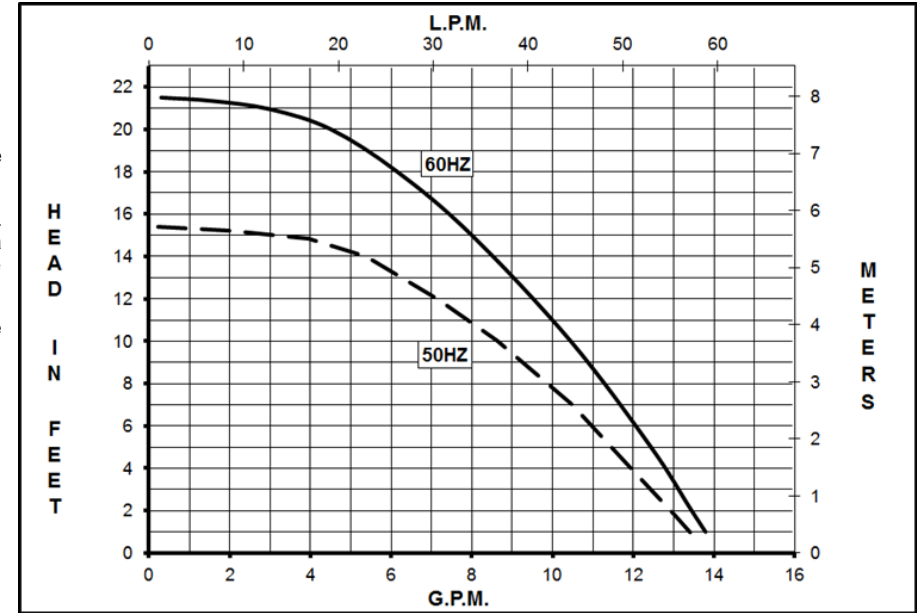
1819 PICKWICK AVE., GLENVIEW, IL 60026-1306, U.S.A  
 PHONE: (847) 729-5300 - FAX: (847) 729-7062  
 WWW.MARCHPUMP.COM

**DESCRIPTION:** [Series 4 are centrifugal magnetic drive pumps](#), eliminating the need for a shaft seal. Pumps can be serviced with a screwdriver. See the parts list for a breakdown of parts.

**OPERATION:** Pumps are not self-priming, lack a suction lift, and thus require a **flooded suction**. Pumps **cannot be run dry** because the impeller requires the liquid being pumped for lubrication. For liquids with a specific gravity greater than water, have a higher viscosity, or for elevated temperatures, a trimmed impeller may be necessary. For application assistance, contact March Pump.

**ELECTRICAL:** BC models have a Blast Cooled Motor and they have an encapsulated impeller magnet. Motors are available in different electrical configurations such as 115 V 50/60 Hz, or 230 V 50/60 Hz, 1 phase. Motors have a 3 ft. (0.9 m) cord. All models have U.L. listed motors, which are rated for continuous duty.

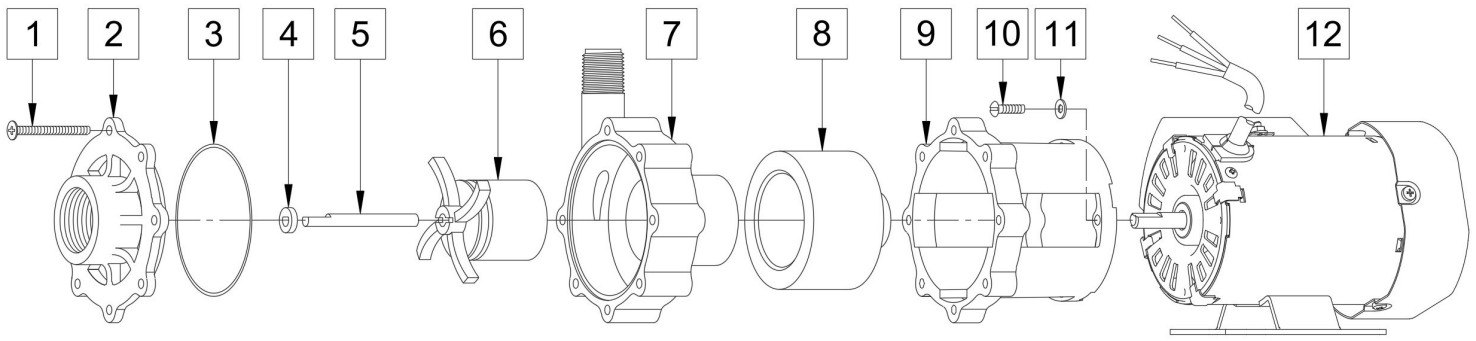
## BC-4K-MD



Specifications		BC-4K-MD
Product	115V	0145-0083-0100
	230V	0145-0084-0100
Inlet-Outlet		1" FPT-1/2" MPT
Max Internal Pressure		75PSI (517 kPa)
Max Liquid Temperature		200F (93C)

Model	60Hz											50Hz										
	Max Flow		Max Head			Electrical						Max Flow		Max Head			Electrical					
	GPM	LPM	FT	PSI	M	Ph	Voltage	AMPS	HP	KW	RPM	GPM	LPM	Feet	PSI	M	Ph	Voltage	AMPS	HP	KW	RPM
BC-4K-MD	14	53	21.5	9.3	6.55	1	115 or 230	1.58 or 0.68	1/10	0.07	3200	13.2	50	15.4	6.7	4.7	1	115 or 230	1.5 or 0.6	1/10	0.07	2700

All specifications & data are based on pumping water & are intended as a guideline only. Specifications may vary with different motors.



**NOTE:** When attaching the Drive Magnet to the motor shaft, position the face of the Drive Magnet 1/16 inch below the face of the Motor Bracket.

**BC-4K-MD**

Item	Part Number	QTY REQ	Description
1	0150-0021-1000	7	#8-32 x 1-3/4" LG. Screw (Stainless Steel)
2	0150-0124-1000	1	Cover with 1" FPT Inlet (Glass Filled Kynar)
3	0750-0986-1000	1	0.078" CS x 2.834" ID "O" Ring (Viton)
4	0130-0028-1000	1	Thrust Washer (Ceramic)
5	0130-0024-1000	1	Shaft (Ceramic)
6	0145-0039-0200	1	Encapsulated Impeller (Glass Filled Kynar)
7	0150-0123-0100	1	Rear Housing with 1/2" MPT Outlet and Thrust Washer ( Glass Filled Kynar/Ceramic)
8	0145-0027-0100	1	Drive Magnet
9	0145-0010-1000	1	Motor Bracket (Plastic)
10	0618-0027-1000	4	#8-32 x 5/8 Lg. Screw (Stainless Steel)
11	0858-0004-1000	4	#8 Washer Flat (Stainless Steel)
12	0145-0035-1200	1	BC Motor, 115V, 50/60Hz
12	0145-0036-1200	1	BC Motor, 230V, 50/60Hz

NOTE: Contact Factory for other materials and/or parts not listed.

Special voltage motors are available upon special order.

**Materials in Contact with Solution: Glass Filled Kynar, Viton, Ceramic**

**LIMITED WARRANTY:** March pumps are guaranteed only against defects in workmanship or materials for a period of one year from date of manufacture pumping water. For the complete warranty and to register online go to [www.marchpump.com/warranty-registration](http://www.marchpump.com/warranty-registration)